



MTA East Side Access 44th and 50th Street Ventilation Facility Plant: Bid and Awarded (\$9,500,000.00) 2016.



15 East 30th Street – Bid, Ground Up 213 Unit Complex, 6000 Amp Distribution Service with Fire Alarm and ARCS Systems and 800KW Emergency Generator System.



258 Buscher Avenue  
 Valley Stream, NY 11580  
 Office: 516-837-0422, Cell: 646-619-7064  
 Email: r2electricalstg@gmail



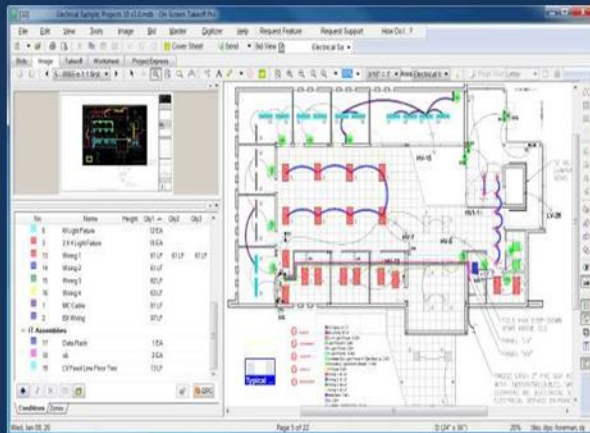
NYS/NYC SBS/PANY & NJ Certified MBE/DBE





## INTRODUCTION

R<sup>2</sup> Electrical Estimating has acquired over 20 years of electrical experience in the construction industry and has been providing electrical estimating and consulting services in the New York Metro area since 2009. We are a small minority owned business dedicated to providing excellent services to our clients in the public and private sectors. Our company consistently exceeds the expectations of our growing clientele in the construction industry with the highest quality of service possible.



## OUR SERVICES

- ◆ Cost Estimating
- ◆ Cost Controls
- ◆ Value Engineering
- ◆ Feasible Studies

## COMPARABLE EXPERIENCE

R<sup>2</sup> Electrical provides cost estimating for low and high voltage systems such as: utility sub-stations, emergency generators, power distribution, fire alarm systems, telecommunication, security/access control systems and PA systems, instrumentation and SCADA (supervisory control and data acquisition) systems for the following facilities:

- ◆ DEP Waste Water Treatment
- ◆ MTA and Port Authority
- ◆ Health Care Facilities
- ◆ SCA / SUNY/CUNY
- ◆ Commercial and Industrial Projects
- ◆ High End Residential



MTA: Bus Command Center  
Ground up – (\$9,555,000)  
Bid Awarded 2015.

## PROJECTS WE'VE WORKED ON

- ◆ DEP Waste Water Treatment Plants – Coney Island, Wards Island, Bowery Bay, Tallman Island.
- ◆ SCA Schools - Range from \$500,000 – \$9,500,000.
- ◆ Port Authority:
  - Bayonne Bridge Mechanical Building/Tower
  - Goethals Bridge Mechanical Building
- ◆ MTA:
  - Barclays Atlantic Stations Security Systems
  - East Side Access CS79
  - 44<sup>th</sup>, 50<sup>th</sup>, 55<sup>th</sup> Street Vent Facilities
  - Culver Line (Ditmas Ave., Avenue X, Bay Parkway)
  - Bus Command Center
- ◆ LaGuardia Airport:
  - West Parking Garage
  - Hangar 5A
  - Chirp Building
- ◆ Tappan Zee Bridge Police Station
- ◆ Moynihan Station: Telecommunication & Security